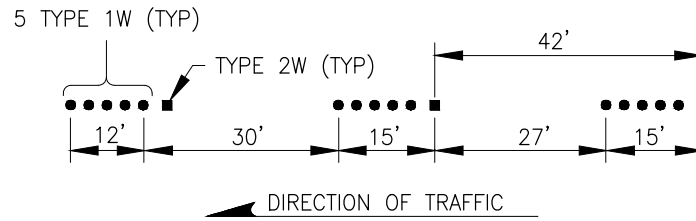
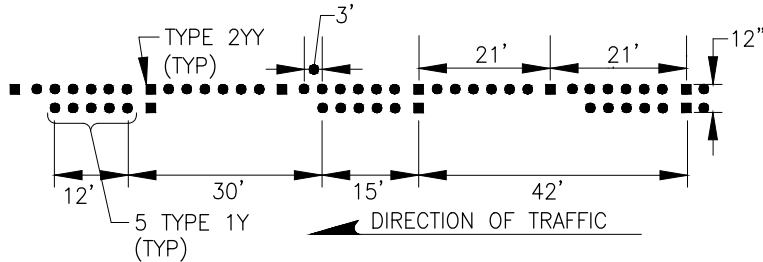


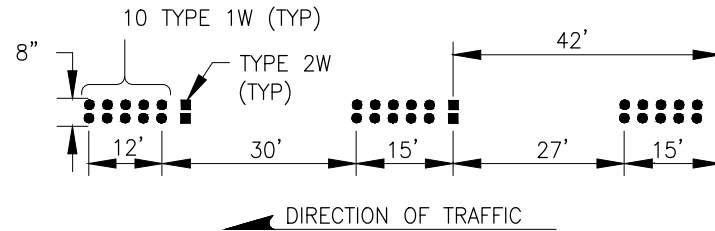
**RPM LAYOUT FOR DOUBLE YELLOW CENTERLINE STRIPE**



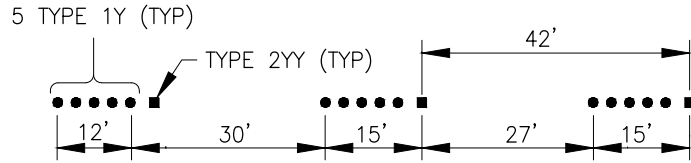
**RPM LAYOUT FOR LANE LINE SKIP STRIPE**



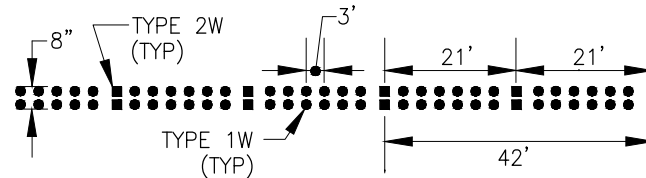
**RPM LAYOUT FOR TWO-WAY LEFT TURN LANE CENTERLINE STRIPE**



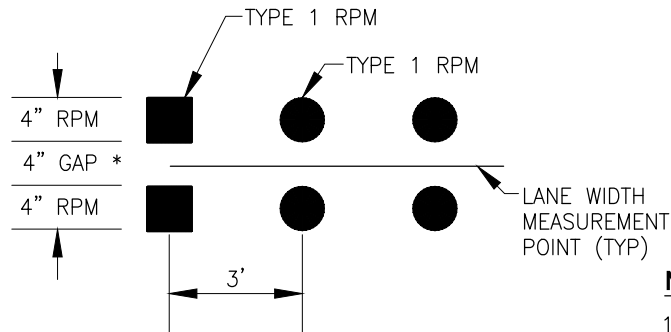
**RPM LAYOUT FOR WHITE WIDE LINE SKIP STRIPE**



**RPM LAYOUT FOR CENTERLINE SKIP STRIPE**



**RPM LAYOUT FOR WHITE WIDE LINE STRIPE**



\* NO GAP FOR WIDE SKIP AND WIDE LINE

**RPM LAYOUT DETAIL**

TYPE 1	NON-REFLECTIVE	YELLOW OR WHITE
TYPE 2YY	REFLECTIVE FACE	YELLOW AND YELLOW
TYPE 2W	REFLECTIVE FACE	WHITE-ONE SIDE ONLY
TYPE 2Y	REFLECTIVE FACE	YELLOW-ONE SIDE ONLY

SEE STANDARD DRAWING DM.F2.8 FOR MORE RPM DETAILS

**RAISED PAVEMENT MARKERS (RPM'S)**

**NOTES:**

1. SEE STANDARD DRAWING DM.F2.8 FOR RAISED PAVEMENT MARKER DETAIL.
2. ALL CHANNELIZATION (OR PAVEMENT MARKINGS) SHALL BE LAID OUT WITH SPRAY PAINT AND APPROVED BEFORE FINAL INSTALLATION. APPROVALS SHALL REQUIRE ADVANCE NOTICE OF THREE WORKING DAYS TO HAVE FIELD LAYOUT APPROVED. NOT TO SCALE



**CITY OF DES MOINES  
PUBLIC WORKS DEPARTMENT**

ENGINEERING SERVICES  
21650 11TH AVENUE SOUTH  
DES MOINES, IA 50319



**CHANNELIZATION LAYOUT WITH RAISED PAVEMENT MARKERS**

**DM.F3.1**

REVISED: 02/23